



Reef Manor

BOURNEMOUTH, DORSET, BH5 1JQ

HURST & HURST ESTATES
FOREVER INNOVATE, NEVER COMPROMISE





We're delighted to welcome you
to your new home



Nestled on the coveted Dorset clifftop, our
exquisite collection of 1, 2 & 3 bedroom
designer apartments awaits

Situated a mere stone's throw away from the renowned sandy beach, step outside your new abode and embark on a leisurely walk down the cliffside ramp to discover the mesmerising ocean, sea view restaurants & bars, charming beach huts, exciting waterside activities, and an array of delightful coastal experiences

Your local area... Perfectly located to suit your lifestyle



Unparalleled Coastline

12+ miles of pristine sandy beaches, steps from your door. Experience unrivalled beauty, from warm summer sands to breathtaking winter sunrises



Exceptional Education

Secure your children's bright future with top-tier educational opportunities. Discover highly-rated schools nearby, catering to all ages. Nurture their growth in a supportive environment, ensuring academic excellence and success



Culinary Delight

Explore waterfront dining with fresh seafood, tantalising drinks, and stunning views. Curated experiences for all your culinary desires



On your doorstep

Attractions & Landmarks

	miles
1 Shelley Park	0.3
2 Boscombe Pier	0.5
3 Southbourne Beach	2.2
4 Bournemouth Pier	2.2
5 Hengistbury Head Nature Reserve	3.2
6 New Forest National Park	8.2
7 Poole Quay	8.3
8 Brownsea Island	8.5
9 Studland	10.9

Travel

	miles
10 Nearest Bus Stop	0.1
11 Pokesdown Train Station	1.0
12 Bournemouth Train Station	1.7
13 Bournemouth Coach Station	1.7
14 Christchurch Train Station	3.1
15 Branksome Train Station	4.7
16 Bournemouth Airport	6.7
17 Swanage Chain Ferry	7.5
18 Poole Train Station	7.7
19 Condor Ferries Poole	8.4

Reef Manor

Education

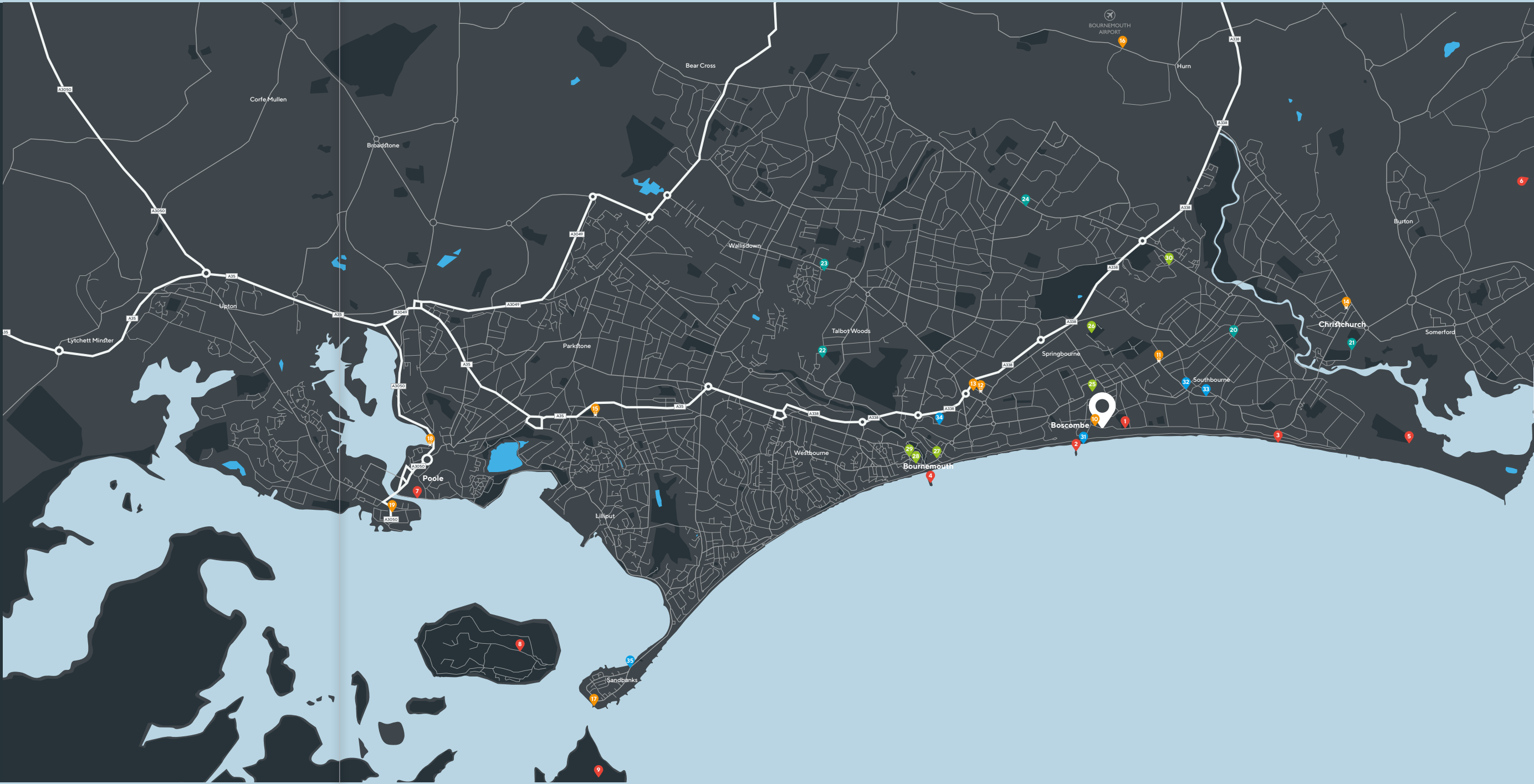
	miles
20 Stourfield Infants & Junior School	1.7
21 Twynham School	3.1
22 Talbot Heath Girls School	3.7
23 Bournemouth University	3.7
24 Bournemouth School for Boys/Girls	4.2

Leisure

	miles
25 O2 Academy	0.8
26 AFC Bournemouth	1.7
27 Pavilion Theatre	2.0
28 BIC	2.2
29 BH2 Leisure Complex	2.4
30 BH Live Active, Littledown	2.5

Food & Drink

	miles
31 Urban Reef	0.5
32 Renoufs Cheese and Wine Bar	1.0
33 Baffi Pizza	1.1
34 Turtle Bay Restaurant	1.9
35 Rick Stein, Sandbanks	7.0



It's all in the detail. The finishing touches

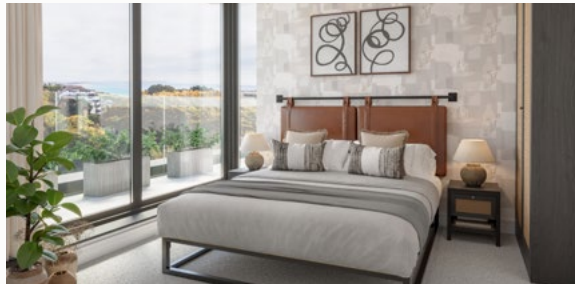


Carbon

A SYMPHONY OF MODERN ELEGANCE AND TIMELESS CONTRAST

The "CARBON" colour palette represents a harmonious blend of modern sophistication and enduring contrast. Drawing inspiration from the sleek aesthetics of the cityscape, it results in a contemporary and luxurious interior design.

Featuring deep charcoal greys and smoky blacks, complemented by striking black ironmongery, "CARBON" artfully plays with the timeless elegance of a black and white colour palette. This palette encapsulates the essence of contemporary design, effortlessly marrying the elements of modern coastal and city-style living.



Mineral

A SYMPHONY OF TRANQUIL BEAUTY AND COASTAL SERENITY

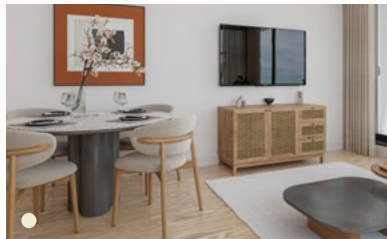
The "MINERAL" colour palette captures the essence of serene beauty, celebrating the tranquil serenity found in nature's embrace. Inspired by the calming hues discovered in earth and stone, it weaves an interior design that stands as a timeless testament to harmony.

With its soft, muted greys, the "MINERAL" palette artfully combines subtle mineral-inspired colours, inviting you to immerse yourself in the calming serenity of nature, mirroring the tranquil allure of the nearby beach. This palette crafts a retreat that seamlessly marries elegance with the coastal beauty that envelops it.

KEY FEATURES

- Convenient EV charging points for eco-friendly living
- Breathtaking balconies, lavish patios, and exclusive roof terraces
- Designer motion sensor low-level lighting by WCs
- Luxurious underfloor heating system
- Opulent floor-to-ceiling sliding windows, connecting indoor and outdoor luxury
- Modern & stylish fully tiled en-suites*
- Elegant & cutting edge fixtures throughout
- Exquisite stone worktops adding elegance to your kitchen*
- High-end integrated Bosch appliances
- Built-in designer wardrobes in master bedrooms
- Peace of mind with a comprehensive 10-year warranty

*Please note that the specification may vary on individual homes and plots. Please ask our sales team for accurate and up-to-date information on specific properties



● CARBON ● MINERAL

*Please note that the specification may vary on individual homes and plots. Please ask our sales team for accurate and up-to-date information on specific properties

The Hengistbury Collection

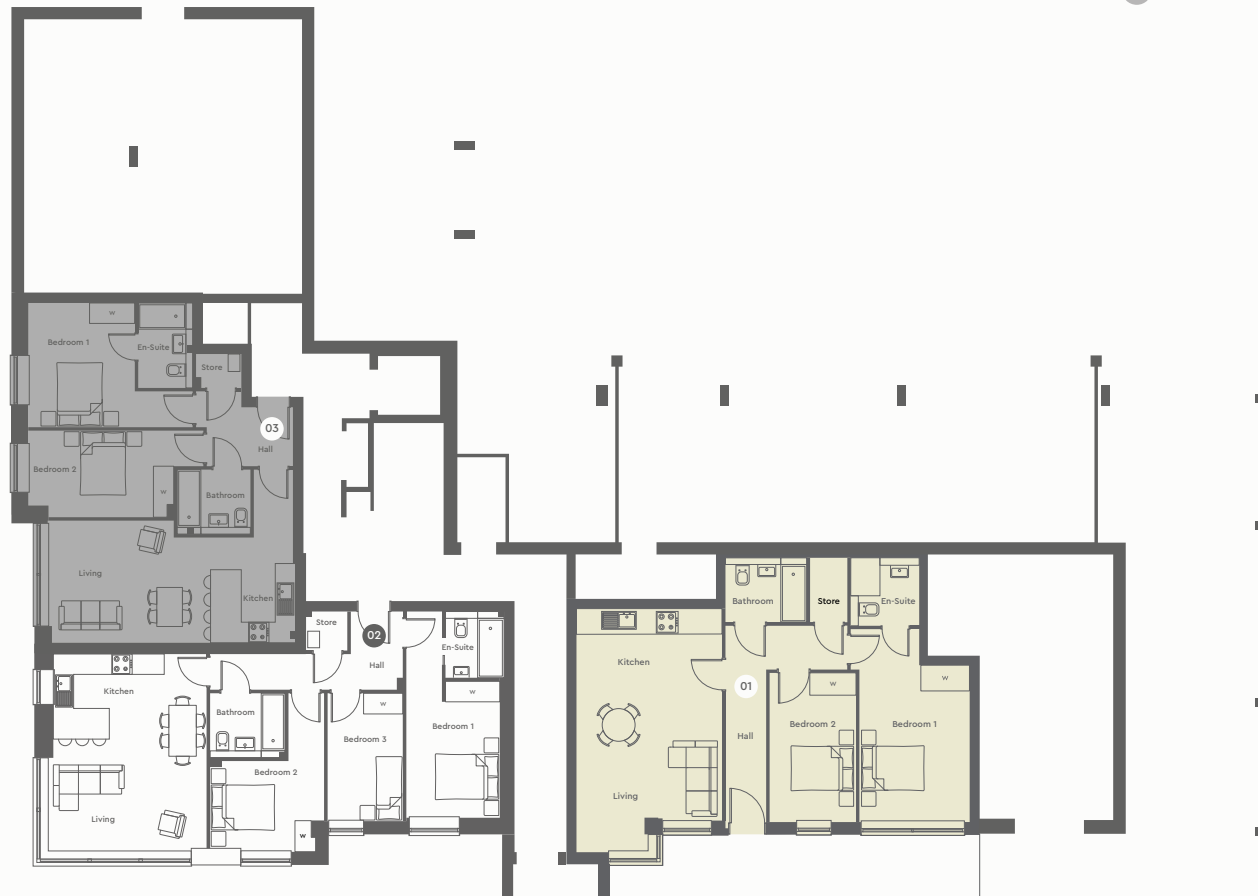
2 BEDROOM APARTMENT



An exquisite ground floor apartment exuding contemporary charm

Enjoy a private entrance and an easterly facing patio accessible through sliding floor-to-ceiling windows from the living room and master bedroom. Underfloor heating spans the open-plan layout, while designer features like Silestone kitchen worktops and motion sensor lighting adorn the bathrooms

● CARBON ● MINERAL



THE HENGISTBURY COLLECTION / GROUND FLOOR / APARTMENTS 01 & 03

The property and development specifications, particulars, descriptions, artistic impressions, photographs, floor plans, configurations, layouts, maps and any other details are for general guidance only and are subject to change without notice.

The Langton Collection

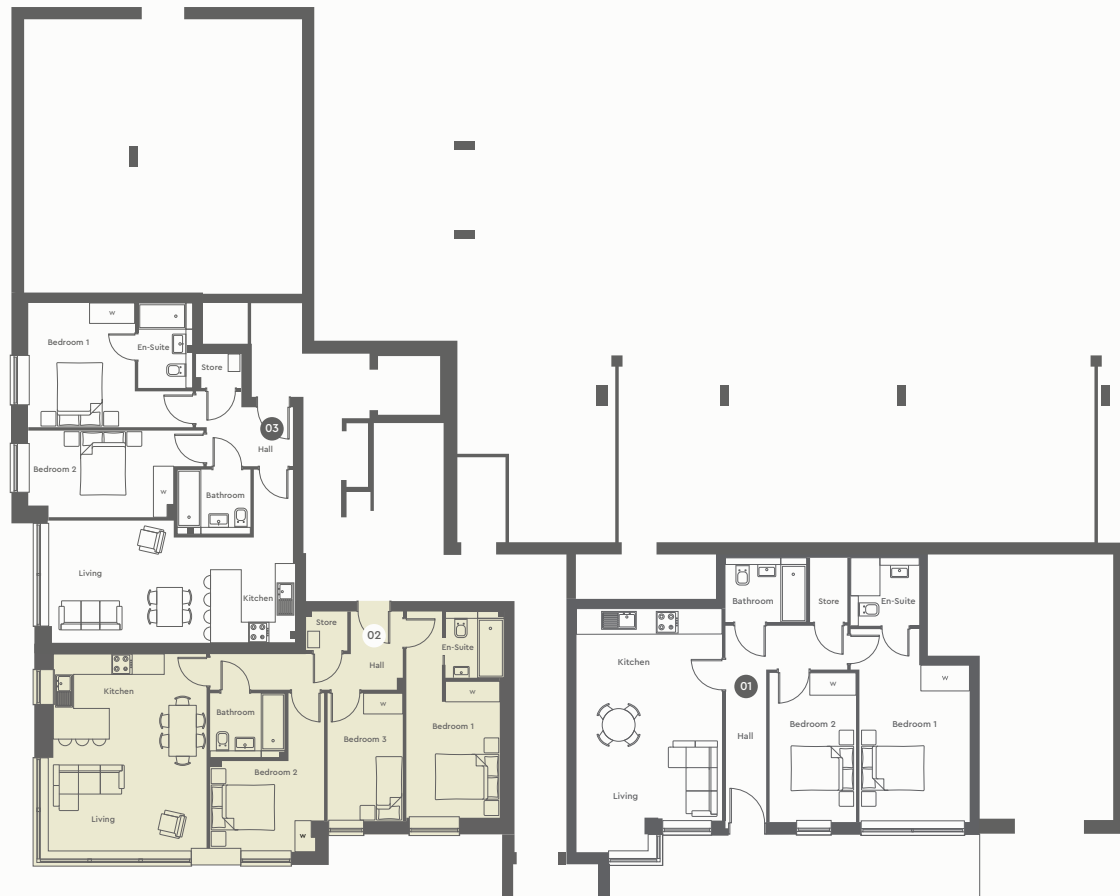
3 BEDROOM APARTMENT



A captivating ground floor apartment exuding contemporary elegance

Perfect for first-time buyers or astute investors, this exquisite dwelling offers three generous bedrooms with fitted wardrobes and a dual-aspect southerly and easterly facing patio accessed through floor-to-ceiling windows. Enjoy underfloor heating, Silestone kitchen worktops, and enchanting motion sensor lighting in the bathrooms, seamlessly blending luxury and style

CARBON MINERAL



THE LANGTON COLLECTION / GROUND FLOOR / APARTMENT 02

The property and development specifications, particulars, descriptions, artistic impressions, photographs, floor plans, configurations, layouts, maps and any other details are for general guidance only and are subject to change without notice.

The Canford Collection

1 BEDROOM APARTMENT



A captivating first floor apartment that embodies contemporary elegance

Perfect for first-time buyers or astute investors, this exquisite dwelling boasts a generous double bedroom, complete with a fitted wardrobe and expansive floor-to-ceiling windows. With underfloor heating throughout, Silestone kitchen worktops, and enchanting motion sensor lighting in the bathrooms, luxury and style intertwine effortlessly



THE CANFORD COLLECTION / FIRST FLOOR / APARTMENTS 08 & 09

The property and development specifications, particulars, descriptions, artistic impressions, photographs, floor plans, configurations, layouts, maps and any other details are for general guidance only and are subject to change without notice.

The Hengistbury Collection

2 BEDROOM APARTMENT



An enticing first floor apartment designed
with contemporary flair

Embrace two double bedrooms and a dual-aspect south and west facing balcony accessed through floor-to-ceiling windows. The master bedroom offers an en-suite and fitted wardrobe. Underfloor heating envelops the open-plan layout, while designer elements like Silestone kitchen worktops and motion sensor lighting enhance the bathrooms



THE HENGISTBURY COLLECTION / FIRST FLOOR / APARTMENTS 05, 06, 07, 10 & 11

The property and development specifications, particulars, descriptions, artistic impressions, photographs, floor plans, configurations, layouts, maps and any other details are for general guidance only and are subject to change without notice.

The Langton Collection

3 BEDROOM APARTMENT



A captivating first floor apartment epitomising contemporary elegance

Ideal for first-time buyers or astute investors, this exquisite dwelling features three spacious bedrooms with fitted wardrobes and a dual-aspect southerly and easterly facing balcony accessed through floor-to-ceiling windows. With underfloor heating, Silestone kitchen worktops, and enchanting motion sensor lighting in the bathrooms, luxury and style effortlessly intertwine



THE LANGTON COLLECTION / FIRST FLOOR / APARTMENTS 04 & 12

The property and development specifications, particulars, descriptions, artistic impressions, photographs, floor plans, configurations, layouts, maps and any other details are for general guidance only and are subject to change without notice.

The Canford Collection

1 BEDROOM APARTMENT



An alluring second floor apartment that encapsulates contemporary elegance

Ideal for first-time buyers or astute investors, this exquisite residence showcases a spacious double bedroom with a fitted wardrobe and expansive floor-to-ceiling windows. Indulge in underfloor heating, Silestone kitchen worktops, and captivating motion sensor lighting in the bathrooms.

Luxury and style harmoniously intertwine



THE CANFORD COLLECTION / SECOND FLOOR / APARTMENTS 17 & 18

The property and development specifications, particulars, descriptions, artistic impressions, photographs, floor plans, configurations, layouts, maps and any other details are for general guidance only and are subject to change without notice.

The Hengistbury Collection

2 BEDROOM APARTMENT



A large second floor apartment radiating contemporary elegance

Delight in two double bedrooms and a south-facing balcony extending across the entire length of the home. Both bedrooms enjoy southern exposure, and the master bedroom boasts an en-suite and fitted wardrobes. Luxurious touches include underfloor heating, Silestone kitchen worktops, and enchanting motion sensor lighting in the bathrooms



THE HENGISTBURY COLLECTION / SECOND FLOOR / APARTMENTS 14, 15, 16, 19 & 20

The property and development specifications, particulars, descriptions, artistic impressions, photographs, floor plans, configurations, layouts, maps and any other details are for general guidance only and are subject to change without notice.

The Langton Collection

3 BEDROOM APARTMENT



A captivating second floor apartment showcasing contemporary elegance

Ideal for first-time buyers or astute investors, this exquisite dwelling features three spacious bedrooms with fitted wardrobes and a dual-aspect southerly and easterly facing balcony accessed through floor-to-ceiling windows. With underfloor heating, Silestone kitchen worktops, and enchanting motion sensor lighting in the bathrooms, luxury and style effortlessly intertwine



THE LANGTON COLLECTION / SECOND FLOOR / APARTMENTS 13 & 21

The property and development specifications, particulars, descriptions, artistic impressions, photographs, floor plans, configurations, layouts, maps and any other details are for general guidance only and are subject to change without notice.





The Canford Collection

1 BEDROOM APARTMENT



Enchanting third floor apartment that exudes contemporary elegance

Perfectly suited for first-time buyers or astute investors, this exquisite abode features a generous double bedroom complemented by a fitted wardrobe and expansive floor-to-ceiling windows. Enjoy the luxurious underfloor heating, Silestone kitchen worktops, and captivating motion sensor lighting in the bathrooms. Unparalleled luxury and style await on the third floor



THE CANFORD COLLECTION / THIRD FLOOR / APARTMENTS 26 & 27

The property and development specifications, particulars, descriptions, artistic impressions, photographs, floor plans, configurations, layouts, maps and any other details are for general guidance only and are subject to change without notice.

The Hengistbury Collection

2 BEDROOM APARTMENT



A large third floor apartment embodying modern sophistication

Revel in two double bedrooms and a south-facing balcony spanning the entire length of the home. Both bedrooms enjoy southern exposure, and the master bedroom includes an en-suite and fitted wardrobes. Luxurious elements such as underfloor heating, Silestone kitchen worktops, and enchanting motion sensor lighting enhance the bathrooms



THE HENGISTBURY COLLECTION / THIRD FLOOR / APARTMENTS 23, 24, 25 & 28

The property and development specifications, particulars, descriptions, artistic impressions, photographs, floor plans, configurations, layouts, maps and any other details are for general guidance only and are subject to change without notice.

The Langton Collection

3 BEDROOM APARTMENT



A captivating third floor apartment embodying contemporary elegance

Ideal for first-time buyers or astute investors, this exquisite dwelling features three spacious bedrooms with fitted wardrobes and a dual-aspect southerly and easterly facing balcony accessed through floor-to-ceiling windows. With underfloor heating, Silestone kitchen worktops, and enchanting motion sensor lighting in the bathrooms, luxury and style effortlessly intertwine



THE LANGTON COLLECTION / THIRD FLOOR / APARTMENTS 22 & 29

The property and development specifications, particulars, descriptions, artistic impressions, photographs, floor plans, configurations, layouts, maps and any other details are for general guidance only and are subject to change without notice.

The Radnor Collection

3 BEDROOM APARTMENT



Elevate your living experience in this exceptional fourth-floor apartment

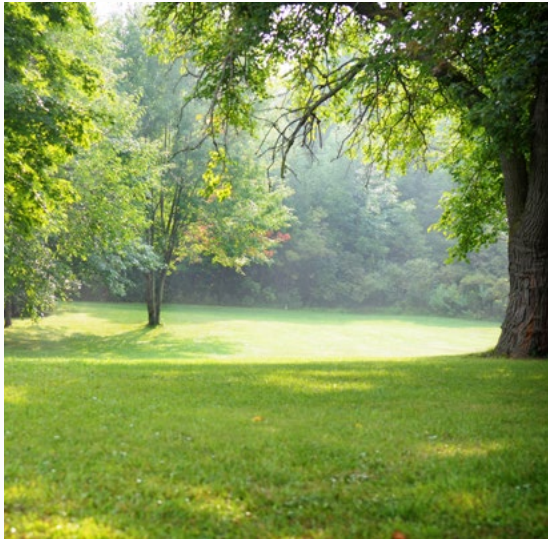
With a deep balcony accessed via floor-to-ceiling windows in the living room, relish in breathtaking views. Embrace underfloor heating, vast windows in the master and second bedrooms, an en-suite, fitted wardrobes, and designer touches like Silestone kitchen worktops and motion sensor lighting in the bathrooms



THE RADNOR COLLECTION / FOURTH FLOOR / APARTMENTS 30, 31, 32 & 33

The property and development specifications, particulars, descriptions, artistic impressions, photographs, floor plans, configurations, layouts, maps and any other details are for general guidance only and are subject to change without notice.

Sustainable Living



At one with nature

Great care and attention was given to maximising the biodiversity in the space around the houses, as well as the large dedicated open space area situated on the East side of the site.

There is a mixture of native planting and a stream, which creates a tranquil environment for all to enjoy



Solar Panels

We have made use of the roof space by incorporating solar panels into the building, and have designed them to be kept out of site, therefore maximising sustainability whilst upholding our renowned design standards



Electric vehicle charging

Each home comes equipped with an electric vehicle charging supply to their car parking spaces as well as secure bicycle storage. There is also a footpath which connects the homes to both the village and nearby countryside walking routes, and the local bus stop is just a short walk away



About Hurst & Hurst Estates

We are a dynamic and innovative house builder, driven by our love for exceptional design, dedicated to crafting exquisite new homes throughout Dorset, Hampshire and the South of England



Hurst & Hurst Estates was established in October 2014, in the charming New Forest town of Lymington, with a vision to redefine new build development as a testament to limitless possibilities, rather than mere conformity.

Our unwavering commitment to quality control permeates our entire organisation, as evidenced by the fact

that our in-house team handles the construction of all our homes.

The demand for our exceptional homes propelled us to expand our operations and evolve as a business. Nonetheless, our team's mission has remained resolutely unaltered.

Today, we take immense pride in being acknowledged as one of the premier

regional house builders in the South of England, continuously pushing boundaries in every realm to showcase what is truly achievable.

"Forever Innovate, Never Compromise" naturally became our slogan, epitomising our approach across all facets of our business, and that ethos will forever remain unchanged





HURST & HURST ESTATES

FOREVER INNOVATE, NEVER COMPROMISE

CALL OUR FRIENDLY SALES TEAM FOR MORE INFORMATION & TO REGISTER YOUR INTEREST ON
01590 382 533 OR VISIT OUR WEBSITE TO FIND YOUR PERFECT NEW HOME
WWW.HHESTATES.CO.UK

Please note: The property and development specifications, particulars, descriptions, artistic impressions, photographs, floor plans, configurations, layouts, maps and any other details are for general guidance only and are subject to change without notice.